



BEYOND UNIVERSE



engrama
teatre

General information

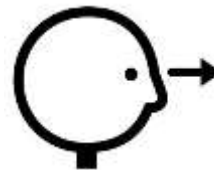
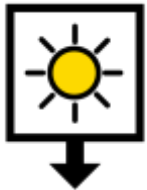
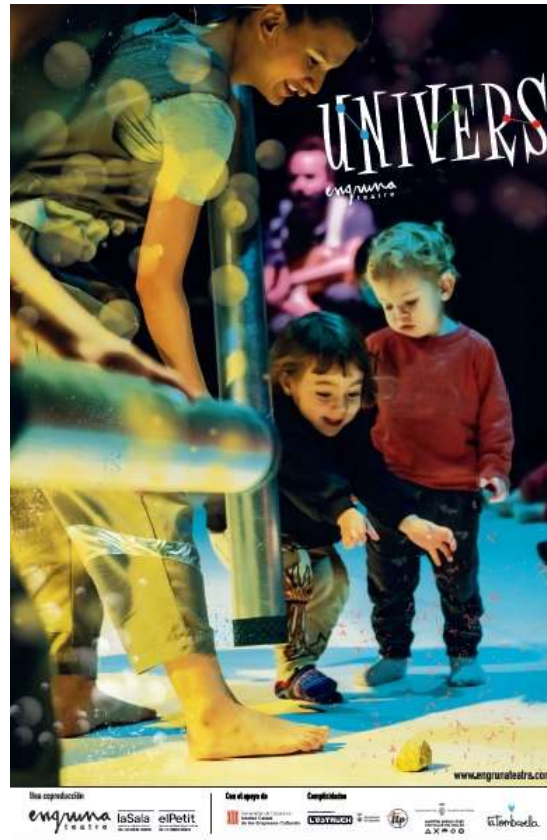
In this guide you will find information about the show BEYOND UNIVERSE.

The material in this guide has been designed in order to help you understand in advance the development of the experience.

Take into account that the session you are attending is for families or schools, so there will be some background noise in the room because there will be other children.

The door of the theatre will be open during the show in case anyone needs to go out of the room.

BEYOND
UNIVERSE



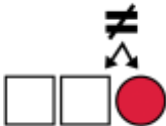
TODAY I'M GOING TO THE THEATRE TO SEE **BEYOND UNIVERSE**



INFORMATION ON THE SHOW



SHOW



DIFRERENT



DANCERS



ON STAGE



DURATION



40 MINUTES



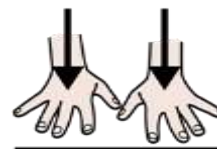
I



LISTEN,



LOOK AND



TOUCH



WHAT DO I DO IN THE THEATRE?



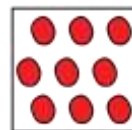
IN



THE THEATRE



I MUST HAVE MY EYES OPEN



TO SEE ALL



THE SHOW.



MY EARS



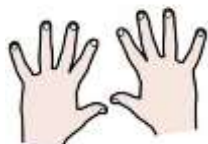
PAY ATTENTION



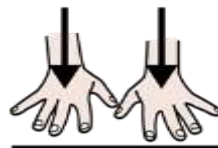
AND LISTEN



OKAY.



MY HANDS ARE READY



TO TOUCH.



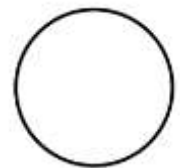
I ENTER



THE THEATRE



AND I SIT ON THE FLOOR



IN A CIRCLE



THE STAGE

BLANCO



IS WHITE

2



1



AND THERE ARE TWO DANCERS AND 1 MUSICIAN



THE DANCERS



SING AND DANCE



THE MUSICIAN



PLAYS MUSIC



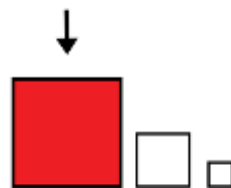
WITH A GUITAR



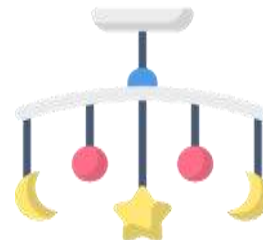
THE DANCERS



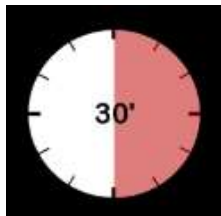
HANG OBJECTS



ON VERY BIG



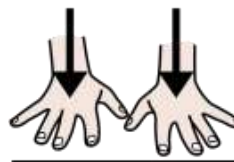
MOBILES



DURING



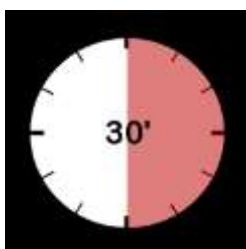
THE SHOW



YOU CAN TOUCH



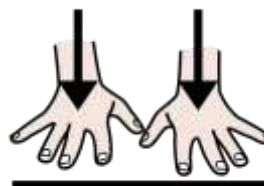
THE GOLDEN STONES



DURING



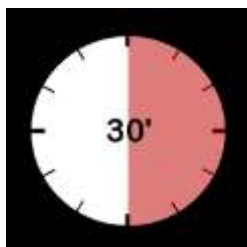
THE SHOW



YOU CAN TOUCH



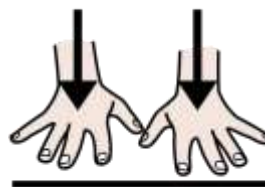
THE BALLS



DURING



THE SHOW



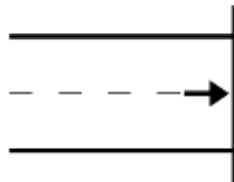
YOU CAN TOUCH



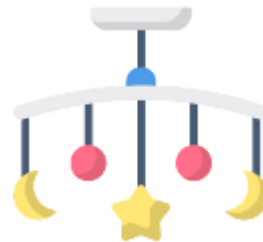
THE TUBES



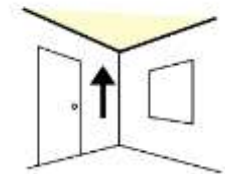
THE SHOW



FINISHES



WHEN THE BIG MOBILES



GO UP



BEYOND UNIVERSE

This guide has been created by

engrama
teatre