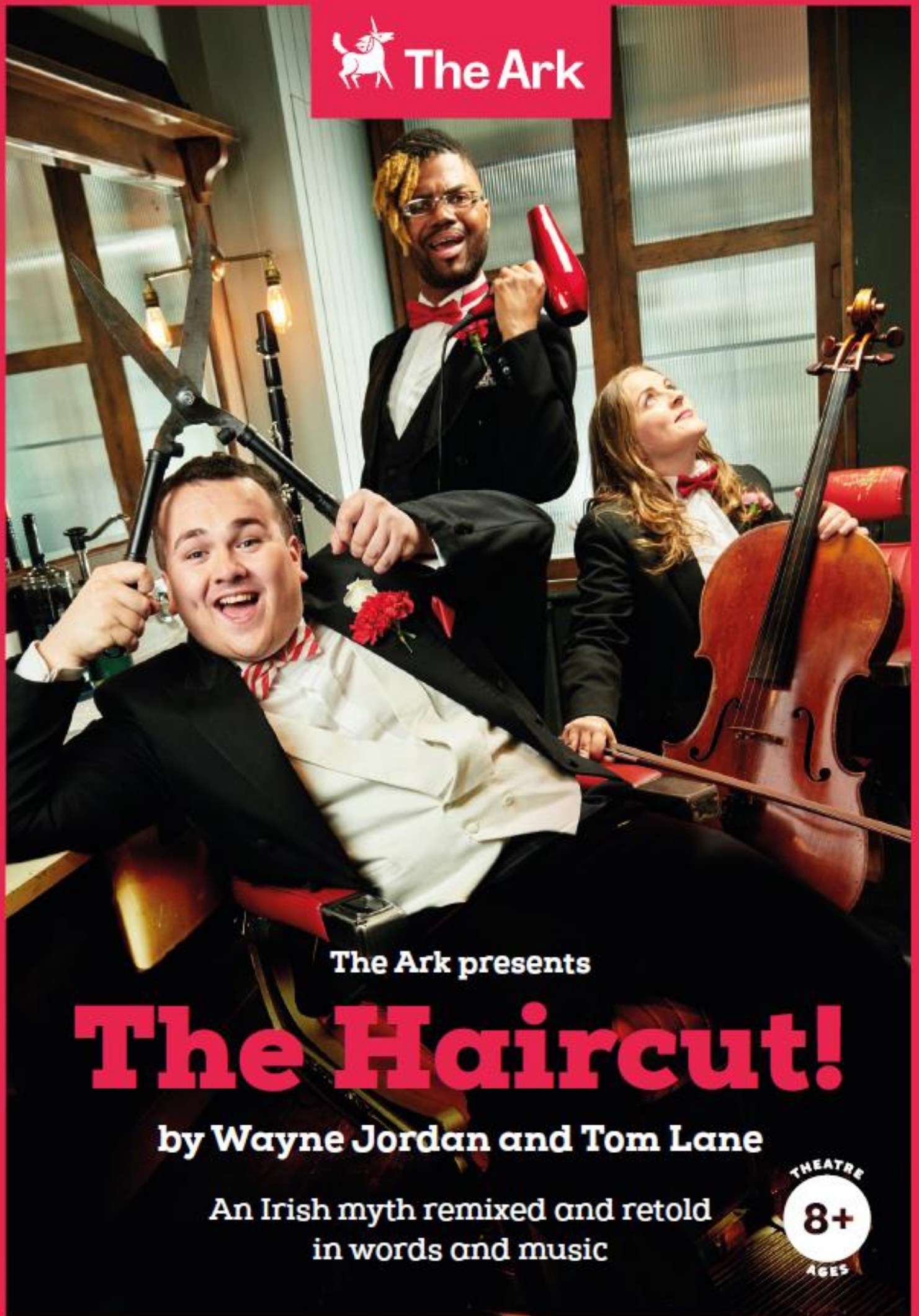




The Ark



The Ark presents

# The Haircut!

by Wayne Jordan and Tom Lane

An Irish myth remixed and retold  
in words and music

THEATRE  
8+  
AGES

# **The Haircut!**

## **By Wayne Jordan & Tom Lane**

### **Available for touring in 2021**

For more information, please contact Aideen Howard at [aideen.howard@ark.ie](mailto:aideen.howard@ark.ie) or call +353 1 6707788

For ages 8+

Duration: Approx 60 minutes

#### **Credits:**

Commissioned by The Ark

Writer/Director: Wayne Jordan

Composer/Musical Director: Tom Lane

Narrator: Thommas Kane Byrne

Percussion: Nicola Ciccarelli

Cello: Lioba Petrie

Clarinet: Berginald Rash

Set & Costume Design: Sarah Bacon

Lighting Design: Sinead Wallace

Producer: Kelly Phelan

#### **Marketing Copy:**

The King has a secret. He wears his hair long and he has it cut only once a year. Once a year on the same night in the same place and in the same style. But never by the same barber.

*The Haircut* is a cautionary tale with a live musical soundtrack.

*The Haircut* is a fairytale remixed and retold.

*The Haircut* is a play about secrets and about creativity stifled. About fighting for what you believe in and standing up to power.

About music and magic and hair.

Set in a magical modern day Ireland, *The Haircut* is a new commission written by Wayne Jordan, delivered with ineffable charm by bright new talent Thommas Kane Byrne and accompanied by Tom Lane's vibrant score played by three outstanding musicians.

The Haircut made its World Premiere as part of The Ark's Theatre for Children season in Dublin Theatre Festival 2019.

**Reviews:**

★★★★ "a win-win", "perfectly paced", "full of fun puns" - The Irish Times

"The key instrument in this tale's retelling is Kane Byrne's supple voice, which slides up and down the octaves as he slips in and out of the various characters, juxtaposing shrill and smoky tones for hilarious effect." - The Irish Times

"This slick show combines old-fashioned storytelling with musical and audio sophistication; an entertaining hour that'll satisfy the most exacting of smaller critics." - Irish Independent

"Musically rich and performatively impressive" - The Arts Review

"The Haircut's celebration of openness and self-expression challenges secretiveness, isolation, and conformity." - The Arts Review

**Video:**

Official show trailer: <https://youtu.be/MyOlb9TXOgc>

Full show video recording available on request. Please contact Jenny Mulligan on [marketing@ark.ie](mailto:marketing@ark.ie)



Production Photographs:

Hi-res photos available on request. Please contact Jenny Mulligan on [marketing@ark.ie](mailto:marketing@ark.ie)



## **Addendum: Technical Rider**

### **Technical Specifications**

For further information please contact: Mark Rooney, Production Manager at [mark@ark.ie](mailto:mark@ark.ie)

DDL: +353 1 899 4092

Mob: +353 87 9969843

#### **Set Elements**

The set consists of the following elements:

Percussion section upstage centre: 5 x large Indonesian gongs hung on 3 frames, a concert sized wooden glockenspiel and electric xylophone on stands, large Casa Drum on frame, snare drum, kick bass drum on floor, 2 x music stands with lights and high table for harp.

Cello position mid-stage left: chair for cello player, cello stand, and music stand with light and a small prop table for harp, 1 x condenser mic on stand

Clarinet position mid-stage right: chair for clarinet player, music stand with light, three clarinets on stands, high prop table for scissors and harp, 1 x condenser mic on stand

Narrator's position down stage middle: barber's chair, small table for harp and various hairdressing props e.g. scissors, spray, towels, \* wash hand basin on stand with shower head dispenser, 1 x SM 58 on stand, lottery Tombola with SM58 on stand, a loud hailer on stand

\***note:** wash hand basin shower dispenser is fed by a water hose - needs an onstage water source

Down stage left and right: 2 x Foley props tables with various hairdressing props e.g. scissors, hairdryer, electrical buzz clippers, 2 x radio mics attached to dummy SM 58's on stands

Foley traps downstage left and right: 2 x bread boards one filled with gravel and the other with leaves and twigs miked to capture footfall, 2 x condenser mic on low stands

#### **Props**

The Ark will provide all props

#### **Capacity**

Standard Studio set-up - 130 capacity maximum

Capacity for a studio setting must be set at a **maximum of 130 seats** unless negotiated in writing directly with The Ark prior to tickets being on sale.

**Small Proscenium Arch Theatre Set-up - 250 seat maximum**

## **Venue**

The performance area must be a minimum of 10m wide x 9m deep x 5.5m high.

## **Duration**

The performance runs for 55 minutes

## **Touring Company**

- 3 x musicians
- 1 x actor
- Production Manager
- Stage Manager
- Sound Engineer / Operator
- Lighting Operator & relights

## **Stage**

The performance is presented in a black box setup i.e. black floor, backdrop and masking legs

## **Rigging**

Presenter to provide:

- No.4 overhead on stage 10m lx bars @ 5m height off the floor
- No. 2 x FOH lx bars

## **Power**

- No. Three (3) x 10amp single phase 240v (110v) outlets
- No. Six (6) additional standard 240v (110v) outlets – on stage power for music stand lights, and props

## **Floor**

Presenter to provide;

- 10m x 9m black dance floor – Harlequin or Rosco

## Lighting Plans

A venue specific lighting plan will be provided on receiving booking venue tech spec and plans

## Lighting Control

Presenter to provide:

- Suitable Lighting desk e.g. ETC ION or similar

## Sound

All music is played live by musicians – sound scenes and effects triggered by cues through sound desk by midi controlled QLab

The Ark will provide:

- Qlab
- Mac mini with all relevant cabling
- 4 x SM58
- 3 x Sennheiser lapel radio mics
- 6 x condenser mics

## Speakers & Sound Console

Presenter to provide:

- An adequate for the venue professional FOH PA system to include full range tops and bass speakers L&R e.g. D&B, JBL, Martin or similar quality
- FOH desk – a digital mixing console with a minimum of 16 inputs & 8 outputs e.g. Yamaha CL/QL series, Midas Pro 1, Digico S series or similar quality
- No. 4 monitor wedges

## Dressing Rooms

- 2 x dressing rooms
- Access to kitchen facilities
- Access to the internet facilities

## Wardrobe

- Washing machine
- Drier
- Ironing & ironing board

## Load-in and Load-Out Times & Schedule

Load-in: 10 hours (includes tech rehearsal)

Load-Out: 4 hours

The Ark will confirm a detailed load-in and load-out schedule as part of venue negotiations

## Load-In and Load-out Crew

Load-in Local Crew: minimum of five multi-skilled technicians for the duration of load-in.

- 1 x Venue Tech @ 10hrs
- 1 General Hand @ 10 hours
- 2 x lighting @ 10 hours
- 1 x sound @ 10 hours

**\*Load-out crew as above with a 4 hour call.**

**Please Note: All The Ark touring production staff work in hands-on roles.**

## Freight

The Production's touring equipment, set, props and costumes will be transportable in a minimum 5 tonne truck.

Presenter to provide clear, direct access for unloading into the venue

All equipment and set elements will fit through a standard doorway.

The presenter must provide a suitable location to store road cases, dollies during the production run, hidden from the audience and not obstructing access/ egress from the stage.

## Risk Assessment

There is a detailed risk assessment of show – this can be made available on request.

\*\*\*



The Ark, A Cultural Centre for Children  
11a Eustace Street,  
Temple Bar, Dublin 2  
D02 A590

[www.ark.ie](http://www.ark.ie)  
boxoffice@ark.ie  
+353 (0)1 670 7788  
@TheArkDublin