


THE LAST MOTH



Relaxed Pack

Created by Sara Gannon
Production photography by Ste Murray

Additional photography by Sara Gannon

DANCE

4+

Welcome

The Ark is so excited to welcome you for the relaxed performance of The Last Moth!

A relaxed performance is just how it sounds: it is a more chilled out way to experience the show. The lights in the theatre will be a little brighter, the sound will be a little lower, and you will be able to come in and out of the theatre as you need.

We have put together some information that you might find useful during your visit to The Ark. You will see and experience many new and interesting things while you are here. We have put together some pictures to help you understand where you are going and what you will see, as well as some information about the play so you know what to expect during the performance.

If you have any questions that are not answered by this pack, please feel free to contact our friendly Box Office team at boxoffice@ark.ie.

We hope you enjoy The Last Moth!



Contents

- Directions p4
- Arriving at The Ark p5-8
- Waiting Areas p9-12
- Toilets p13-15
- The Theatre p16-18
- About the Show p19-22
- Content Awareness p23-38
 - What will you see in the theatre? p24-25
 - What will you hear in the theatre? p30-34
 - Specific Sounds p35
 - Lights p36-37
 - Other p38
- When the show is over p39



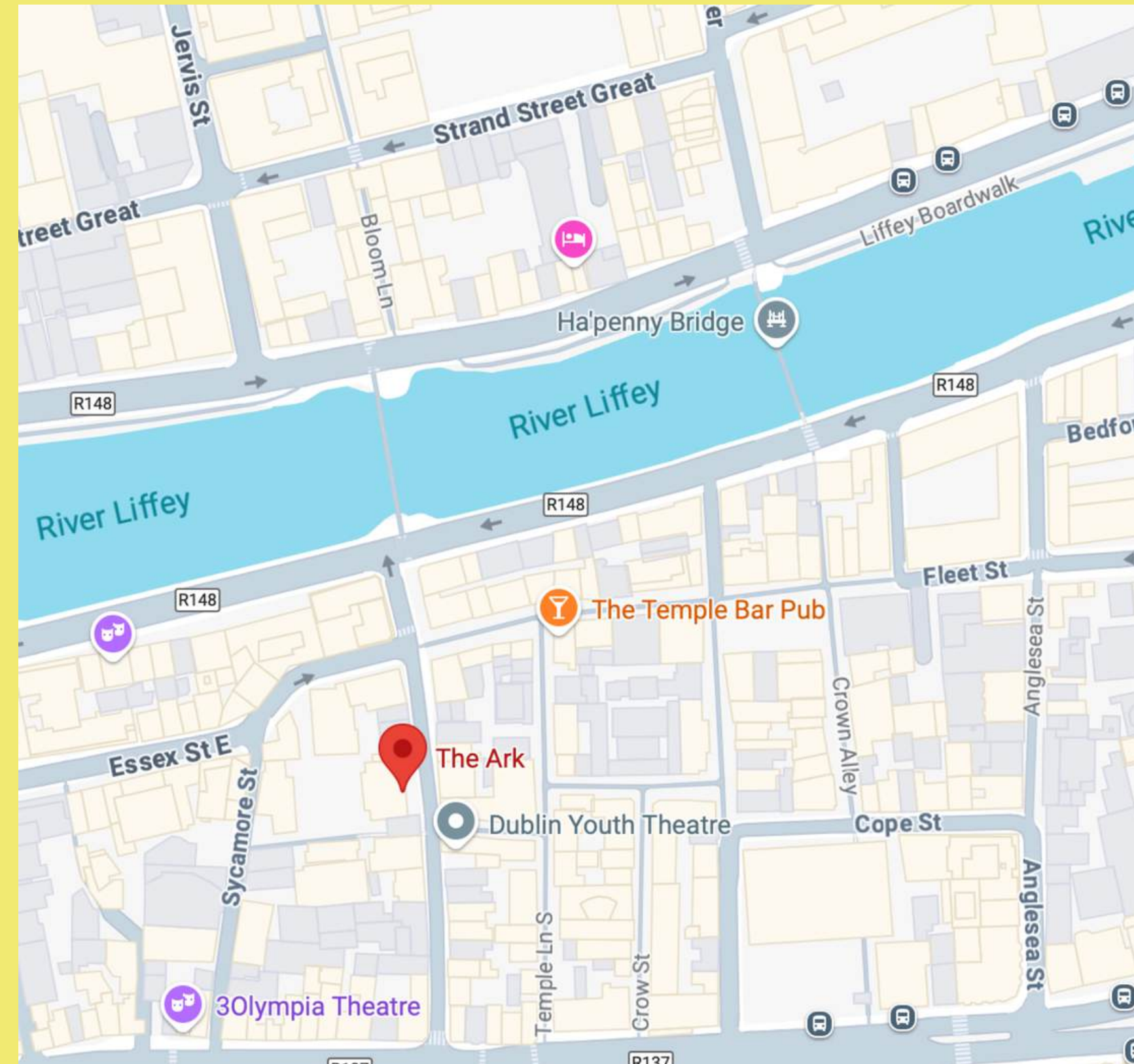
Directions



The Ark is on 11a Eustace Street, in Temple Bar. The entrance to the building is fully accessible and has step free access. Please note that Eustace St. is a cobbled street.

There is a lift in the building that can take you to each level of the building. Accessible toilets and baby changing are available on the ground floor.

If you have any access requirements, please let us know at boxoffice@ark.ie and we will do our best to help.





**Here are some
things you will
see on the day**





This building is called The Ark. You will come here to see the show.

The Main Door

You will go through here to get inside. The doors are automatic, so they will open for you when you are near them. They make a “whirring” sound with a “thunk” as it opens and closes.



Box Office

When you arrive at The Ark, you will meet someone in a blue jumper. They are our friendly Visitor Services Team! You might meet them at the door, or at the front desk. They will check you in and tell you where to go.

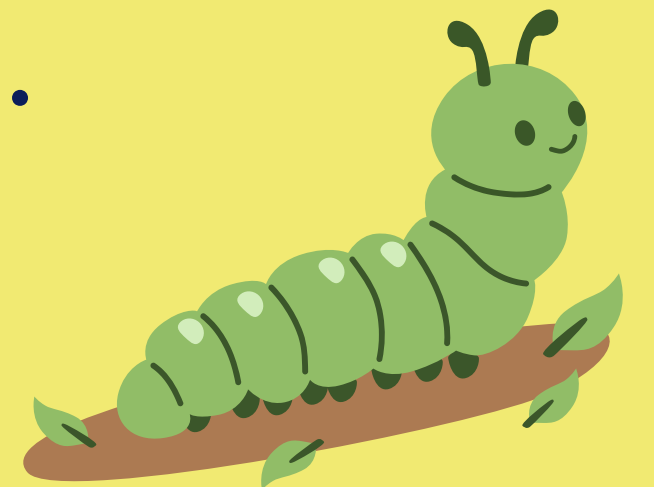


Waiting Areas

There are three places that you might wait before going to the theatre.

Other children will be waiting there also.

There will usually be a red coat rack where you can hang up your coats and bags.



The Basement

The basement does not have any windows, but it has lots of lights so it isn't dark. It can sometimes sound a bit echoey in the basement. To get to the basement, you can take the lift to -1. You can also go down one flight of stairs from Box Office.



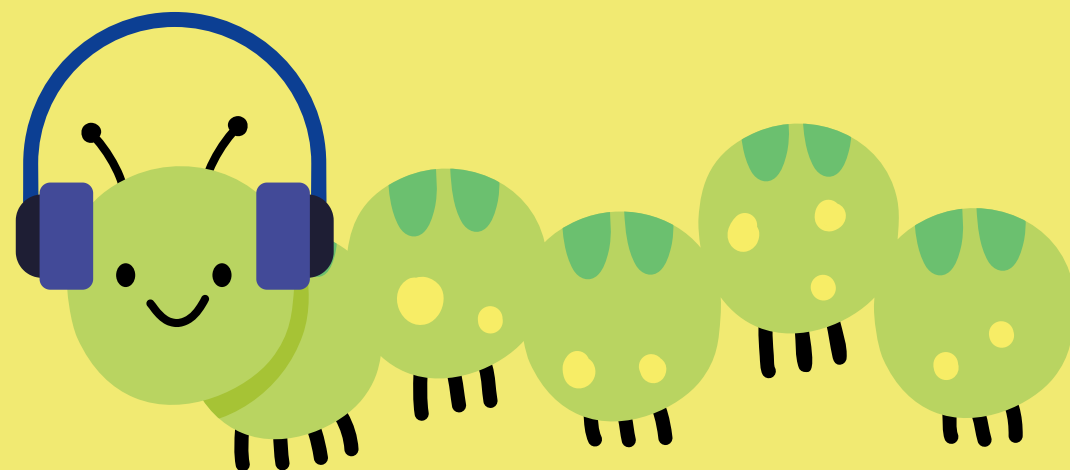


The Long Room

This is a room full of light and big windows. To get to the long room, you can take the lift to level 1. You can also go up the stairs from Box Office.

Box Office

If it is nearly time for the show, you might wait at box office instead. It can be a little loud and crowded here, but there are ear defenders and ear plugs available that you can use if you need, just ask!





Toilets

You can find
toilets in the
basement
through the red
doors.

The girls' toilets are on
the left.



The boys' toilets are on
the right.



You can use whatever toilet you feel
most comfortable in.



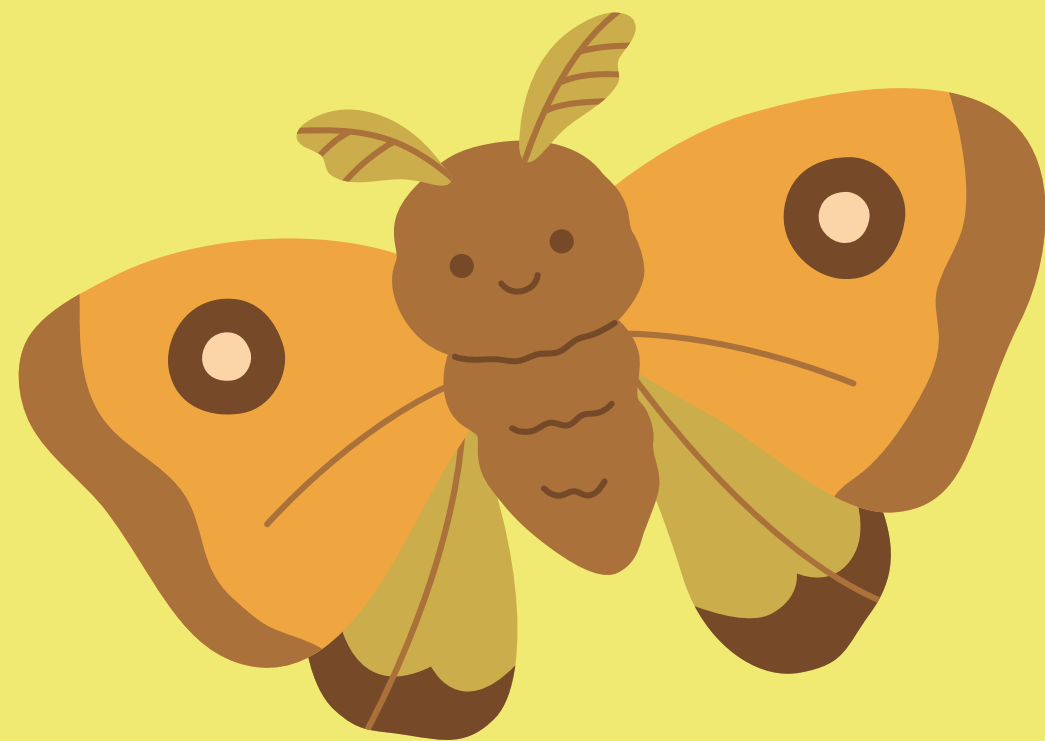


When we are in the theatre there is a toilet just outside. Our Visitor Services Team can tell you where to go.



The Door to the Theatre

We go through this door
when it is time for the
event.





**Where will
you sit?**



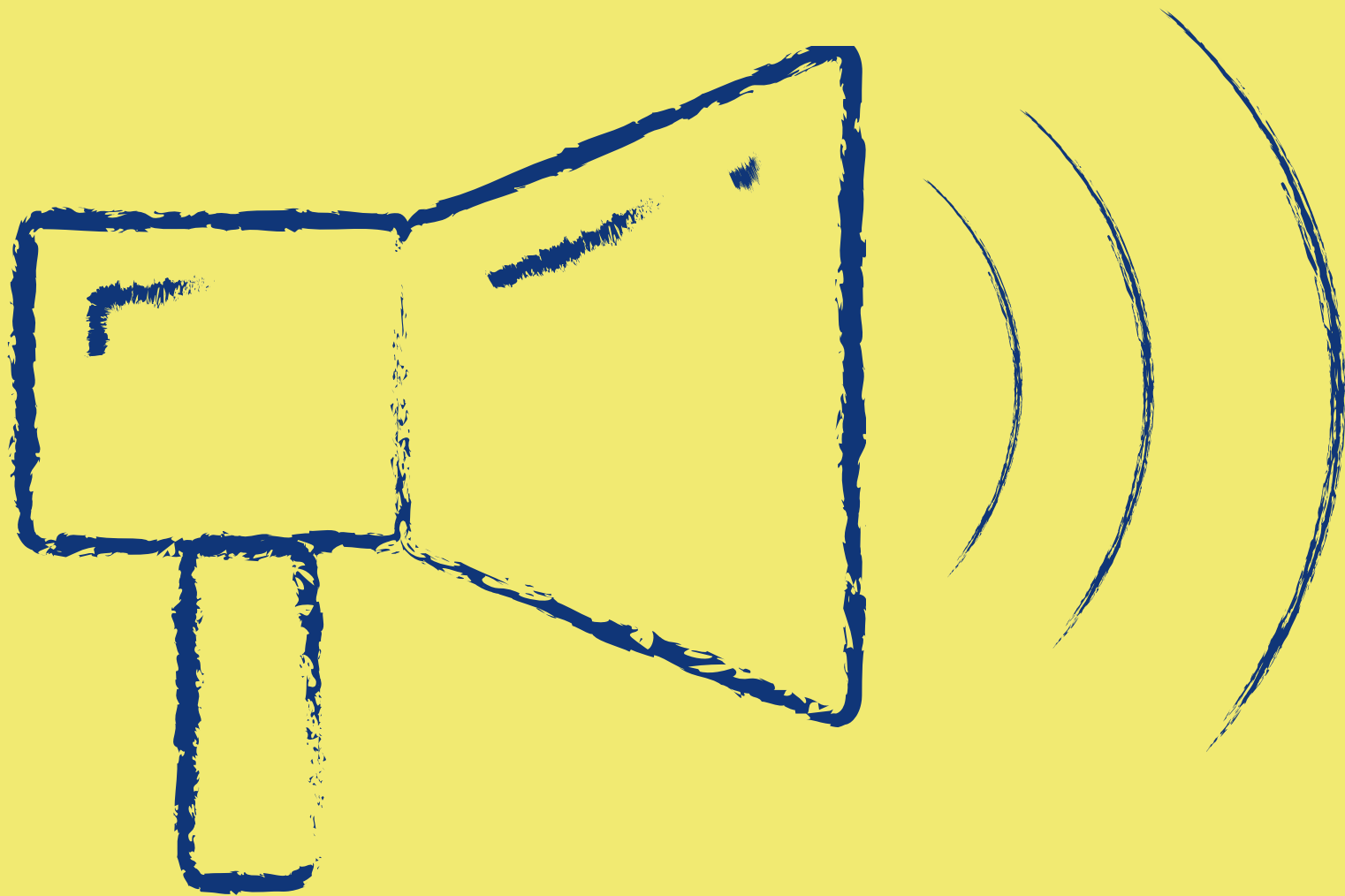
We all sit on
the benches
in the theatre.

If you want a break at any time, you can go to the relaxation space in the basement.



About the Show

- When the moon begins to fade, one small creature decides to do something REALLY big. They might not be as popular as their colourful cousin, the butterfly, but they're not afraid to fly into the unknown to embark on a journey through nature, to discover their own inner beauty. Blending sound, movement and song, this show celebrates bravery, nature and our hidden hero, the moth.
- The Last Moth is The Ark's first co-commission of a work by a child and an adult.
- The Last Moth is 45 minutes long.
- There is one performer. She tells us the story through music and movement.
- There is no right or wrong way to watch the show- we want you to have a good time! If you want to make a noise, or have a wriggle in your seat, that is okay.
- If you need to take a break from the theatre at any point, you can step out and come back in when you are ready.
- You will know The Ark's Front of House staff by their blue jumpers. If you need to leave the theatre during the performance, they can help you. If you have any questions or worries about the show, they are friendly faces to talk to!



Some of the sounds you will hear will be intense and loud. We will let you know when these sounds are about to happen.

If you have headphones that you like to wear in noisy spaces you can bring them.

Ear defenders and ear plugs will be available at Box Office, if you need them.

The lights in the theatre will dim during the performance so it will be a little bit darker but you will always be able to see your way out.



The Cast



This is Niamh. Niamh plays Caterpillar.

Content Awareness

What will you see
and hear in the
theatre?





When you enter
the auditorium,
this is what the
set on stage
will look like.

- At the back of the stage, there is a projection screen. You will see different moving images on this throughout the show. When you take your seats, there will be trees on the screen.
- There are lots of lightbulbs hanging from the ceiling. They are wrapped in fabric. What do you think they look like?
- There are big green walls at the sides of the stage. There are places on the front walls for Caterpillar to sit.

Caterpillar mentions lots of moth names during the show. On the next pages, we have pictures of these moths next to their names. How many do you recognise?



Northern Deep Brown Dart

I usually live by the sea and hide during the day on rocks where you will never find me



Leaf Miner

(Many different species of small moths are 'leafminers!') We are so small we are nearly impossible to find. We live within a leaf so that we can't be eaten and we make squiggly lines.



Buff Arches

Her squiggly lines and orange colour make her look like a piece of stone. She is so pretty when looked at closely.



Straw Dot

I'm easy to remember because I'm the colour of straw and I've a dark dot. I like to rest in the grass with my head facing downwards.



Peppered Moth

You'll never find me when I'm asleep on a tree trunk. I had to change colour when there was lots of pollution.



Eyed Hawk Moth

If I get scared I flash my back wings and show my huge black and blue 'eyes'. This will frighten away the birds. My caterpillar is bright green with a 'unicorn' horn on my tail.



Common Carpet

She has black and white stripes and flies during the day like a small butterfly. Their caterpillars resemble small twigs to hide from the birds.



White Ermine Moth

I look like I'm wearing a white fur coat and underneath it I have a bright yellow body. My caterpillar is very hairy and can often be found crossing the footpath.



Pebble Prominent

The patch on his wings looks like a pebble but when looked at from the front he is very hairy.



Campion Moth

When I first emerge I have a purplish colour but I lose this after a day or two. I can be found flying around Red Campion flowers in the evening.



Gold Spot Moth

I have two shiny metallic spots on my wings which sparkle in the sunshine. I like to live near rivers and lakes.



Shears Moth

The markings on my wings look like a pair of scissors. I also like to live by the sea and eat dandelions.



Ghost Moth

The Males have silvery white wings and in the evening they dance over tall grass, floating like a ghost. The females are more secretive and have lovely yellow and orange colours.



Heart and Dart Moth

I've got a love heart and a dagger on my wings. Can you see these symbols?



Clouded Border Moth

I'm sometimes called the Cow Moth because I'm black and white. My marking change a lot depending on where I live.



Willow Beauty

I don't eat willow despite my name but I do eat loads of different trees and shrubs. You'll find me in your garden at night time during the summer.



Shark Moth

The tuft of hair on my head looks like a shark's fin. I also resemble a twig when I'm asleep.



Knot Grass

My caterpillar is hairy and very colourful but please don't pick me up. I eat lots of different plants.



Bordered Gothic

I only live on the south coast of Ireland. I have funny lines and marking on my wings which sometimes look like a horse's head.



Buff Tipp

I look exactly like a broken birch twig so I can hide in plain sight. When I'm an adult I don't eat as I live off the fat that I stored up as a caterpillar.



Foxglove Pug

We are named after a plant and a dog! We live inside the foxglove flower for most of our lives and you can find me wherever you see the plant.



Purple Bar

My wings look like a purple and white velvet cloak. I'm one of the carpet moths but I don't think I look like a carpet!



Mottled Beauty Moth

I live in the woods and hide by day on the tree trunks. I never look like my sisters and brothers, we are all totally different.



Pod Lover

I get my name from eating lots of seed pods. I also live at the seaside and love the beach.



Small Magpie

I'm black and white just like a magpie bird. I eat nettles so please leave some in your garden for me.



Flame Shoulder

I have brightly coloured stripes on the edge of my wings. I often fly in gardens throughout the summer and eat the weeds.

Sounds



During the show, you will hear lots of music and sounds. Some of these sounds are sudden or a bit loud.

- At the start of the show, you will hear crunchy nature noises when Caterpillar wiggles.
- Caterpillar will take out a tortilla chip and eat it. You will hear lots of crunching eating noises when this happens.
- Not long after Caterpillar opens the scroll, she will start to make noises, a bit like a baby learning to talk. Her voice will sound a strange, maybe even a little electronic!
- After Caterpillar rolls her body back to the scroll, one of the lights will start to flicker and you will hear the sound of wings flapping.

Sounds



While Caterpillar is looking at the moon through the telescope, something starts to go wrong with the moon:

- There is a rumbling sound, and a noise that sounds fizzy like static.
- The screen will get fuzzy and the moon will shrink.
- There will be the sound of thunder, the lights will flash and then go very dark, and the moon will fall from the sky!
- There will be fog that comes out from the side of the stage.

It won't stay dark for long, and the sound of thunder passes quickly.

Sounds

- When Caterpillar sings to Mother Shipton Moth, a storm begins. There will be some thunder and lightning, and the lights will become very dark again. The back walls of the set will move closer together and you will hear the sound of rain.
- There will be claps of thunder throughout the storm.
- During the storm, Caterpillar get a fright and lets out a little scream.
- You will hear big gusts of wind during the storm.





Lights



- When you enter the theatre, the lights onstage will be a little dark, while the lights over the seats are bright. Once the show begins, the lights over your seats will dim but they won't turn off. After the cast enters, the lights onstage will become brighter again.
- It can sometimes become quite dark during the show, but you will always be able to see your way out.
- Some specific moments you might like to be aware of are detailed on the next page. You can skip this if you would rather wait to see for yourself!

Lights



While Caterpillar is looking at the moon through the telescope, something starts to go wrong with the moon:

- There will be the sound of thunder
- The lights will flash and then go very dark
- The moon will fall from the sky
- There will be fog that comes out from the side of the stage.

It won't stay dark for long!



After Caterpillar sings to Mother Shipton Moth, a storm begins:

- There will be thunder and lightning.
- The lights will become very dark again.

Other



- Niamh will move quite close to the audience during the show, but she won't touch you.
- Parts of the set move during the show. Some of the panels near the back of the stage will move side to side.
- If you would like to take a break from the theatre, our friendly Visitor Services team can help you.

When the show finishes, there will be clapping. People clap at the end of a play to show the performers that we enjoyed the play. You can join in if you want to.

After the clapping we will leave the theatre and go back to school or go home.



**Thank you! We look
forward to welcoming
you to The Ark.**

We hope you enjoy the show!

